



# Paradigm Imaging Group

Distributor of Large Format Scanning & Printing Solutions

888.221.7226(SCAN) or [www.SCANtopia.com](http://www.SCANtopia.com)

## EIS Turbo

Express Imaging System  
Scan > Print > Copy

### Mono & Color Scanning!

## Introducing EIS TURBO

High speed 36" wide, 600dpi Monochrome Network LED printer for outstanding results for CAD/GIS applications

36" scan width with scan speeds up to 6-ips in B/W and 2-ips in color

Touch screen and keyboard control of ImageFLOW™ interface

Flexible connectivity options - share the printer with other networked workstations and make copies to other networked printers

Intuitive and easy to use ImageFLOW™ software for scanning, printing and copying functions

Powerful Rocket™ Scanner Controller provides the needed horsepower for scanning & copying large documents

State of art technology for FM's, CAD/GIS and Reprographics - the EIS family of large format multi-function systems provides maximum flexibility to meet your scanning, copying and printing needs.

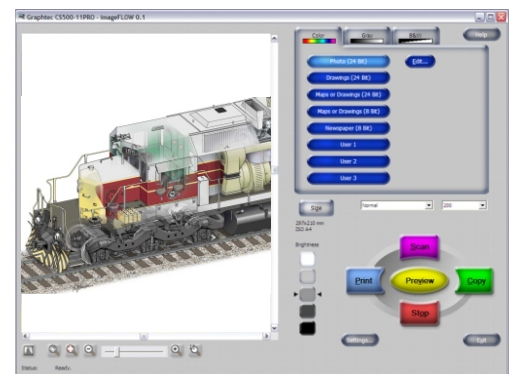
## Large Format Multi-Function | Scan > Print > Copy

## EIS TURBO



State-of-the-Art  
Document Imaging Software

- Touch Screen Compatible
- Easy to Use Interface – Copy, Scan & Print
- Supports Current Graphtec Scanners
- Over 550 Printers Supported
- Hot Folder Print Que
- Includes over 325 ICC Output Profiles
- ICC Profile Editing
- Print Postscript Files
- Create Job Sets (Seiko LP-1010)
- Future Support for KIP, Oce & Xerox



# Specifications for EIS TURBO

Scanner Specifications	Graphtec SK200-09
Scanning Width	36" (centered) / 36.5" (max. document width)
Document Thickness	up to 0.8mm (including the carrier sheet)
Optical Resolution	600 dpi
Interpolated Resolution	upto 1200 dpi
Main scanning system	Contact Image System (five A4 sensors in a staggered pattern)
Max. Scanning speed at 400 dpi: (High Speed   Normal   High Quality)	
_ Monochrome	6.0      3.5      3.0    inches/sec.
_ Gray	6.0      3.5      3.0    inches/sec.
_ Color (8-bit, 24-bit)	2.5      1.0      0.75   inches/sec.
Scanning precision	+ -0.1% or + -1 pixel, whichever is larger
Gradation	Monochrome: Bi-level, intermediate tones (dithering, error diffusion)   Gray: 256 shades   Color: 24-bit
Threshold value	A DSP (digital signal processor) enables automatic setting of the threshold value (monochrome scans only)
Color space	RGB
Censor	
_ Total number of pixels captured	22,020 x RGB = 66,060
_ Light source	LED, RGB
_ Output	Color : 42bits/pixel, Grayscale : 14bits/pixel
Interface	USB 2.0 (High Speed)
Rated Power Supply	100 to 120/200 to 230 VAC + -10%, 50/60 Hz
External Dimensions (w/ stand)	46.65 x 28.15 x 37.99 inches
Weight (approx. incl. the std.)	38kg / 84lbs

Printer Specifications	Seiko Teriostar LP-1010
Imaging Method	Electrophotography
Output Resolution	600 dpi
Continous Output Speed	6.2 D-size prints per min., 3.4 E-size prints per min.
Warming-up Time	less than 8 min.
Paper Feed	2-rolls, Automatic Feed
Paper Ejection	Front Side Ejection
Maximum Output Width	36"
Maximum Output Length	33 feet
Margin Sizes	1/8" on right/left side, 1/5" on front side, 1/2" on rear side
Maximum Output Area	36 inches x 33 feet
RAM	256MB (Standard)
HDD	20GB
Interface	Ethernet (10/100 Base-TX)
Network Protocol	USB 2.0, Centronics TCP/IP (ftp, lpr, socket)
Data Format	HP-GL, HP-GL/2, HP RTL, TIFF, CALS
Dimensions	Plotter 46" (W) x 22" (D) x 49" (H)
Weight	less than 419 lbs.
Power Supply	110V Model: 120V-15A, 220V Model: 230V-10A
Power Consumption	Operation: less than 1,350W, Standby: less than 60W

Scanner Controller	Rocket Specifications
Operating System	Windows XP® Professional
Processor	2.8 GHz Pentium 4
Memory	1 GB DDR PC2100x 1200 dpi
Hard Drive	80GB SATA-150 (7200 rpm) 8MB Cache
CD/DVD	CDRW/DVD ROM Combo Drive
Networking	10/100Mb Fast Ethernet
Keyboard	Mini 101 Keyboard w/ Touch Pad
Monitor	15" Touch Panel (1024x768)
Onboard Graphic	Integrated SiS315 VGA

EIS Turbo	
<b>Combined Weight</b> (Scanner, Stand, Printer & Controller)	<b>538 lbs.</b>
<b>Foot Print Size</b> (height, lenght & width)	<b>58" h x 68" l x 36" w</b>

**90 Day On-Site Warranty**