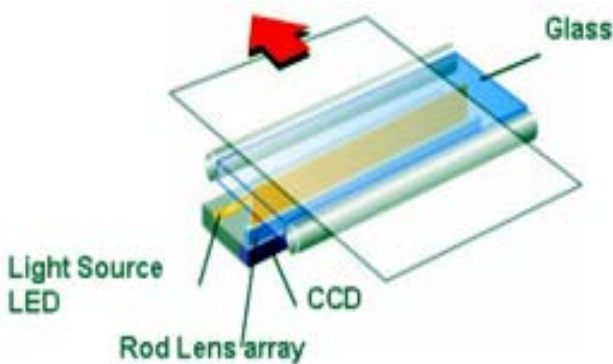


## The Graphtec Advantage

Why should your customers choose Graphtec Scanners?

*The Answer:*

### Contact Image Sensor Technology



The Contact Image Sensor technology used on the Graphtec scanners utilize an array of LEDs as the light source, positioned in a staggered pattern across the width of the scanning bed. This approach not only eliminates lens distortion inherent in scanners utilizing CCD technology but also eliminates stitching errors.

In addition Contact Image Sensor technology results in much sharper edges, clearer lines and reduced corona effect.

### CIS vs. CCD scanner

CIS: Contact Image Sensor Method

CCD: Magnification Optical Method

All Graphtec scanners currently use the CIS sensor system, ensuring sharp, crisp and clear image reproduction. This technical advantage is further reinforced by a very accurate paper feed and hold technology. Even deep wrinkles on paper can be smoothed to provide optimal image reproduction. Graphtec scanners provide stunning high-resolution images compared to other products in the market. Graphtec scanners (CS600/500) achieve a wider color gamut using the CIS method instead of the older CCD method. CS600/500 can produce high levels of precision and accuracy, as well as a high Optical Resolution of 600dpi. These are truly state-of-the-art scanners that not only meet the needs of industries requiring precise images such as civil engineering drawings, city planning drawings and apparel paper patterns, but also satisfy the needs of the graphic arts and printing industries.

### Corona Effect



### CCD Technology



### Contact Image Sensor

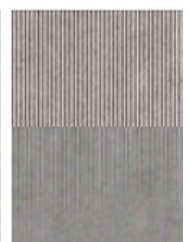
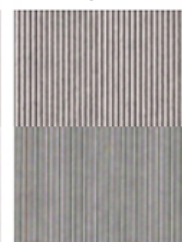


6 line/mm  
300dpi

8 line/mm  
400dpi

10 line/mm  
500dpi

CIS



CCD

